

CERTIFICATE OF LOCATION OF GOVERNMENT CORNER

County of Anoka

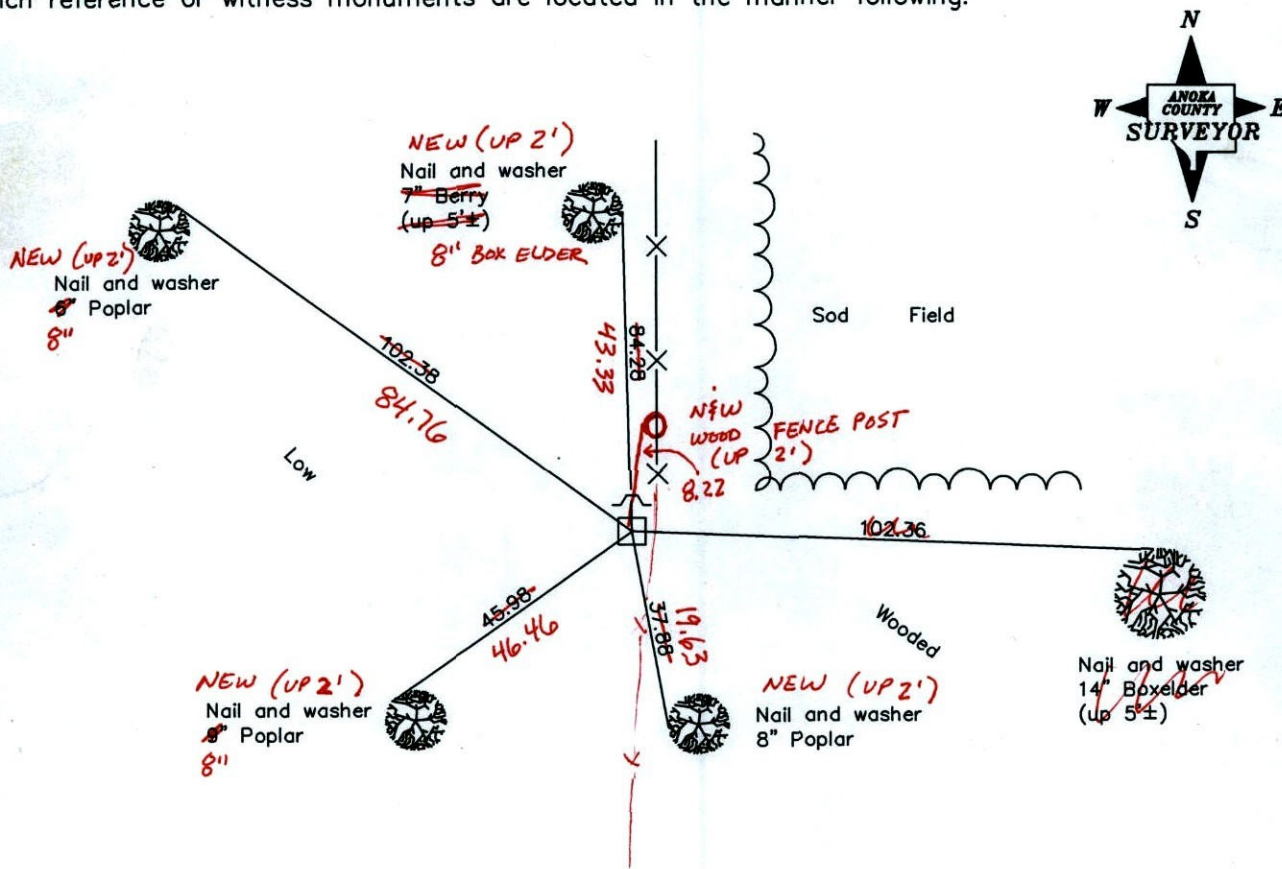
State of Minnesota

East 1/4 Corner of Sec. 28 Township 32 Range 23

I hereby certify that on the 9th day of December, 1975, I found the described corner which was evidenced by a granite monument found by N.C. Hoium

and I further certify that to perpetuate the location of said corner, I did, at the exact location thereof, place a permanent marker consisting of the granite monument with a sign and post on the north side

which reference or witness monuments are located in the manner following:



3-8-11
BK-SS
TAPED

Revised date

| |
|---------|
| 8/13/93 |
| 9/03/96 |
| 2/06/02 |
| |
| |

N.A.D. 1983 Coordinates
(1996 adjustment)

| | |
|-----------------------------|-------------------------|
| County Project Coordinates | State Plane Coordinates |
| Northing <u>172180.4332</u> | Y _____ |
| Easting <u>516168.2089</u> | X _____ |

Date 2/06/02

CERTIFICATE OF LOCATION OF GOVERNMENT CORNER

County of Anoka

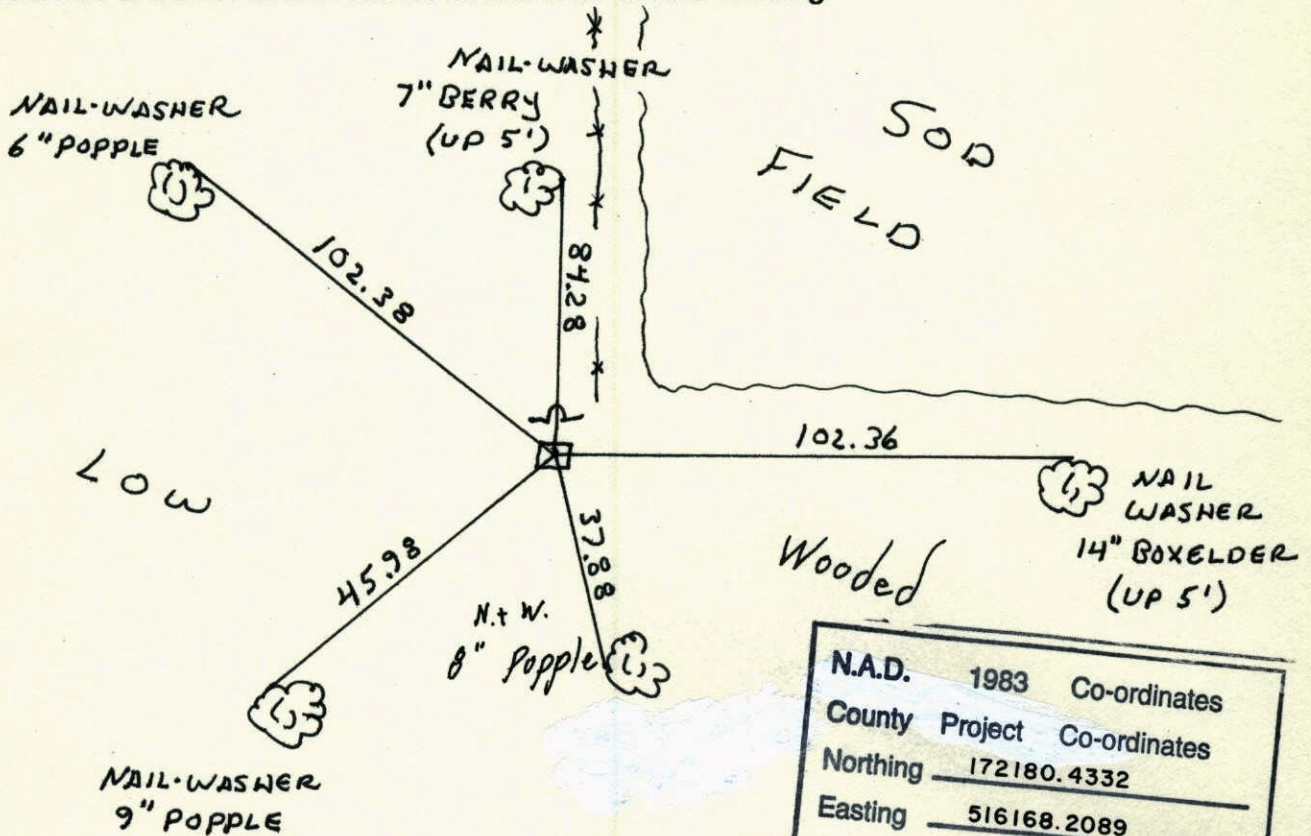
State of Minnesota

EAST 1/4 Corner of Sec. 28 Township 32 Range 23

I hereby certify that on the 9th day of DECEMBER 19 75, I found the described corner which was evidenced by GRANITE FOUND BY M.C. HOLM

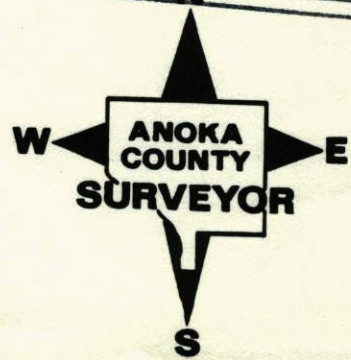
and I further certify that to perpetuate the location of said corner, I did, at the exact location thereof, place a permanent marker consisting of GRANITE MONUMENT SIGN AND POST ON NORTH SIDE

which reference or witness monuments are located in the manner following:

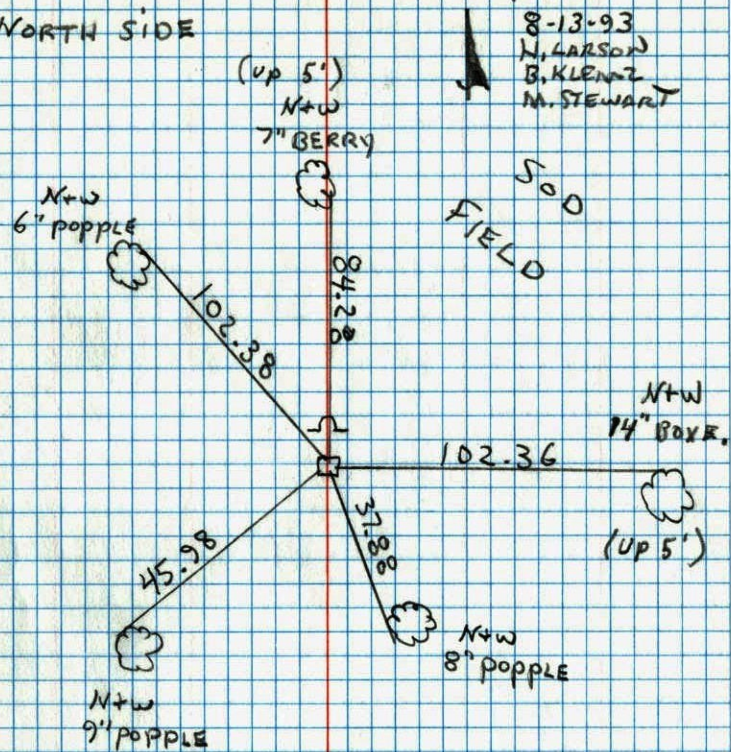


| | | |
|------------------------------------|---------|--------------------|
| N.A.D. | 1983 | Co-ordinates |
| County | Project | Co-ordinates |
| Northing | | <u>172180.4332</u> |
| Easting | | <u>516168.2089</u> |
| State Plane Co-ordinates | | |
| Y | | _____ |
| X | | _____ |
| Date <u> </u> <u> </u> <u> </u> | | |

| Revised date | Revised date | Revised date |
|-------------------|--------------|--------------|
| <u>7-10-81</u> | | |
| <u>6-15-93</u> | | |
| <u>8-13-93 HL</u> | | |
| <u>9-3-96</u> | | |
| | | |
| | | |
| | | |

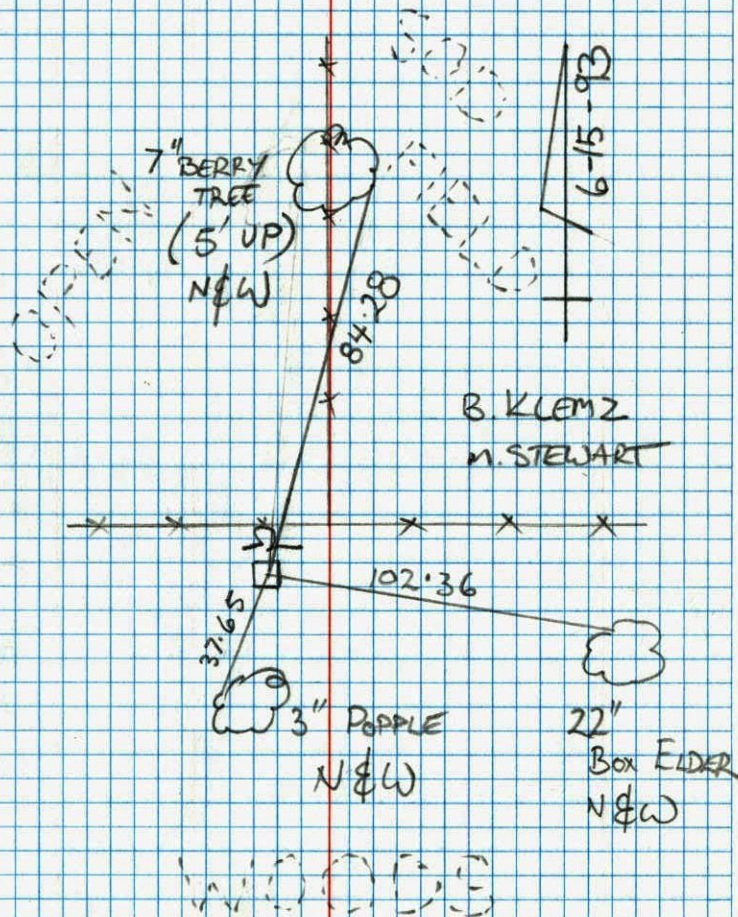


E 1/4 CORNER SECTION 28 T32 R23

RETIED GRANITE MON. SIGN + POST ON
NORTH SIDE

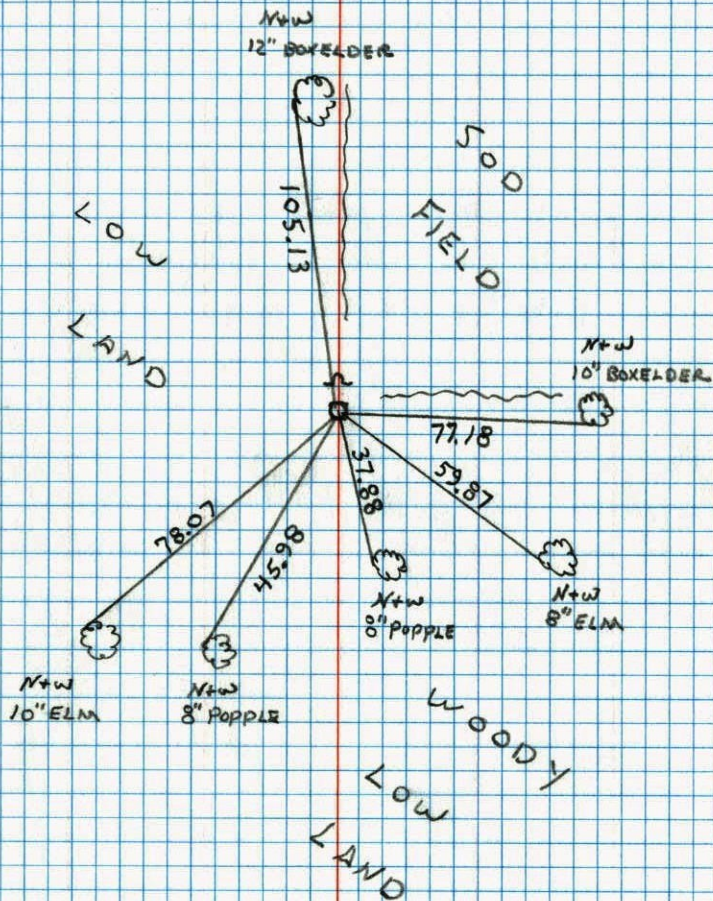
EAST 1/4 SEC 28 T32 R 23

RETIED GRANITE MONUMENT



E 1/4 CORNER SECTION 28 T32 R23

RESET GRANITE FROM AREA RESURVEY GRANITE
FLUSH. SIGN + POST ON NORTH SIDE.



E 1/4 Corner Sec 28 T32 R23

Retie Granite Monument, Found By

N.C. Hoium. Monument Up 1", Sign

And Post On North Side Mon. 15 Not Stable

Nail & Washer
2" Broken
Off Popple

Tie Check

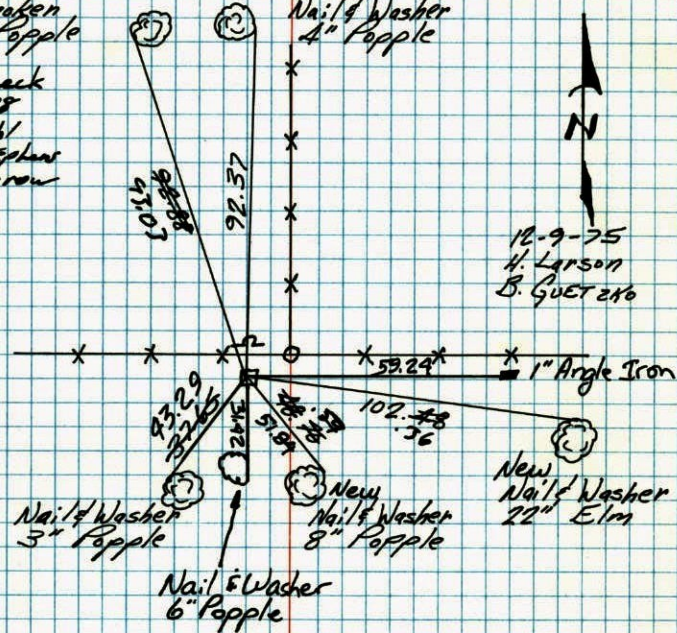
6-19-78

D. Dahl

D. Stephens

M. Kiron

Nail & Washer
4" Popple



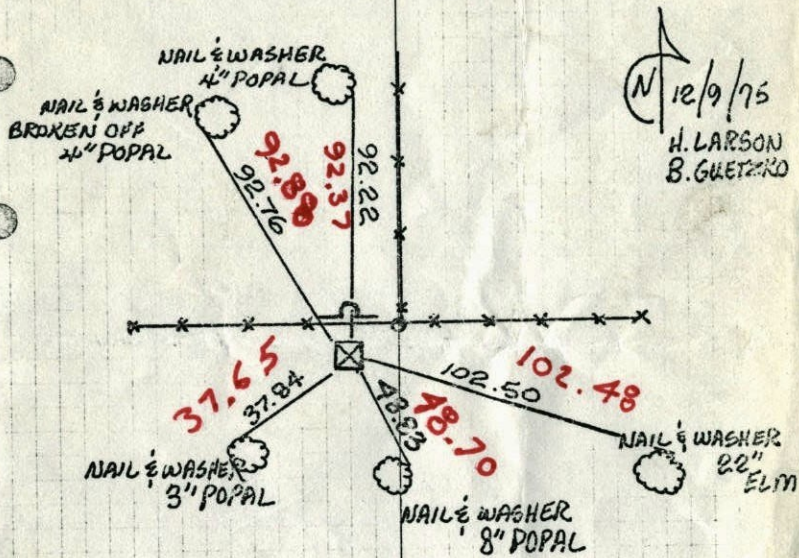
TIE CHECK
July 13-1989
R. Bennett
D. Ross
Q. Lips

TEMPERATURE CORRECTED
AND HORIZONTALLY
TAPED MEASUREMENTS

ROLAND W. ANDERSON
COUNTY SURVEYOR
ANOKA COUNTY, MINNESOTA

E. 1/4 CORNER SEC. 28, T. 32, R. 23

RETIED GRANITE MONUMENT FOUND
BY N.C. HOIUM. MONU. UP 1'±
SIGN AND POST ON NORTH SIDE.



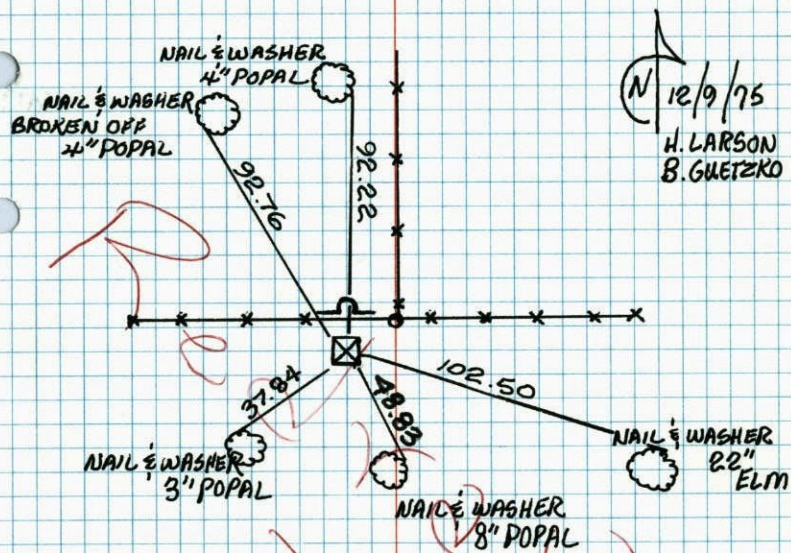
Straghtened
monument
4-19-76
H. Larson
B. Guetzko

TEMPERATURE CORRECTED
AND HORIZONTALLY
TAPED MEASUREMENTS

ROLAND W. ANDERSON
COUNTY SURVEYOR

E. 1/4 CORNER SEC. 28, T. 32, R. 23

RETIED GRANITE MONUMENT FOUND
BY N.C. HOIUM. MONU. UP 1'±
SIGN AND POST ON NORTH SIDE.

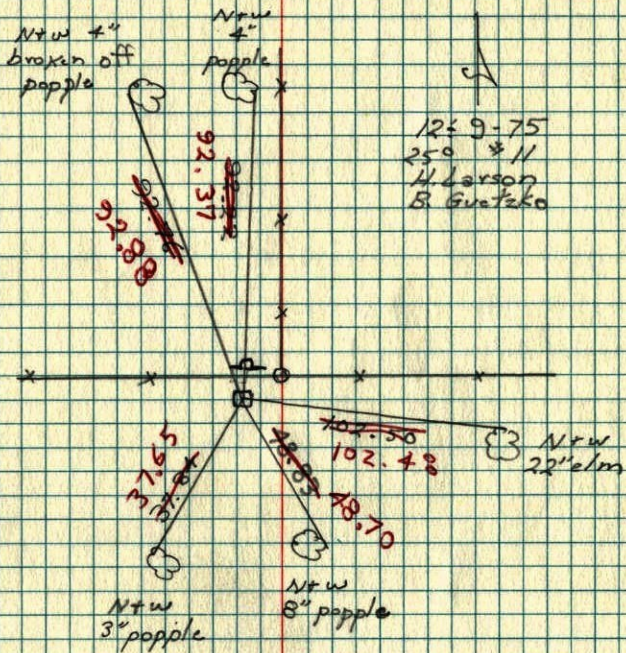


TEMPERATURE CORRECTED
AND HORIZONTALLY
TAPED MEASUREMENTS

ROLAND W. ANDERSON
COUNTY SURVEYOR
ANOKA COUNTY, MINNESOTA

E 1/4 Cor. Sec. 28 T32 R23

Ratified granite monument, Found by N.C. Harum. mon. up 1'4", sign + post on North side



GRANITE IS LOOSE

E 1/4 Cor. Sec 28-T32-R23

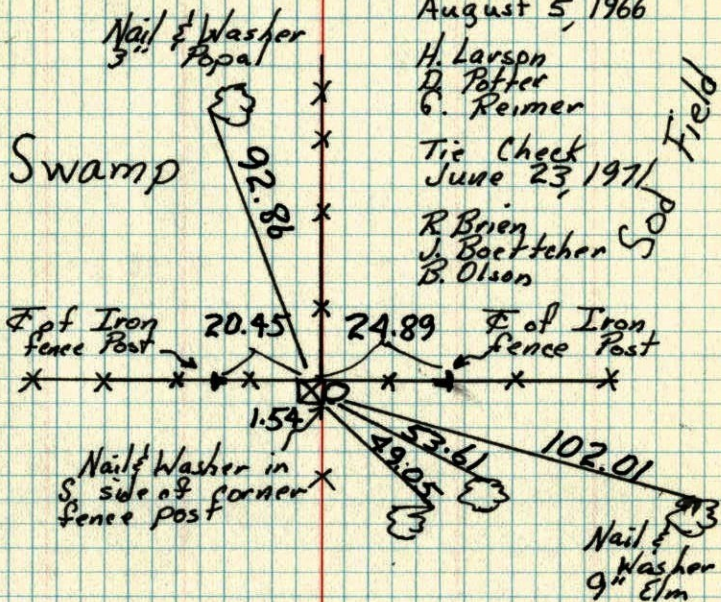
Found granite monument located by N.C. Harum Up 1'

August 5, 1966

H. Larson
D. Potter
G. Reimer

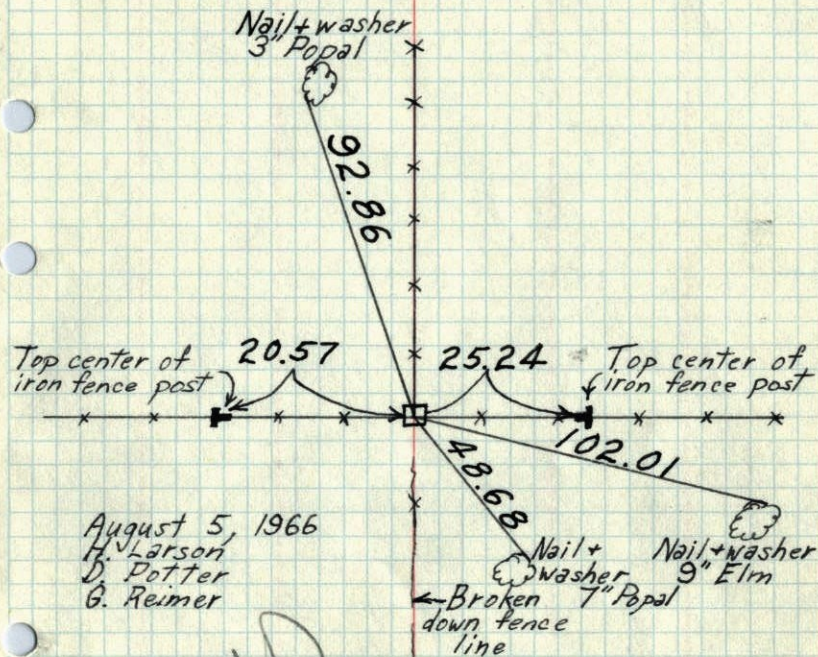
Tie Check
June 23, 1971

R. Brien
J. Boettcher
B. Olson



E 1/4 Cor. Sec. 28-T32-R23

Found Granite monument located by
N.C. Hoium. Up 1'.



August 5, 1966
H. Larson
D. Potter
G. Reimer

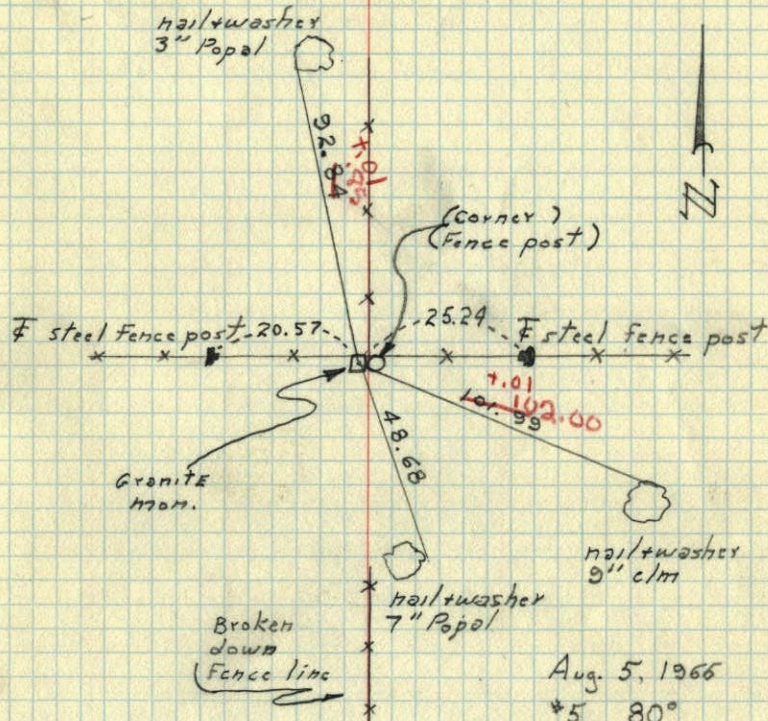
VOID
SEE NEW
TIES H.L.

TEMPERATURE CORRECTED
AND HORIZONTALLY
TAPED MEASUREMENTS

ROLAND W. ANDERSON
COUNTY SURVEYOR
ANOKA COUNTY, MINNESOTA

E 1/4 Sec. 28 T32 R23

Found and Tied out Granite monument.
up. 1 Foot.



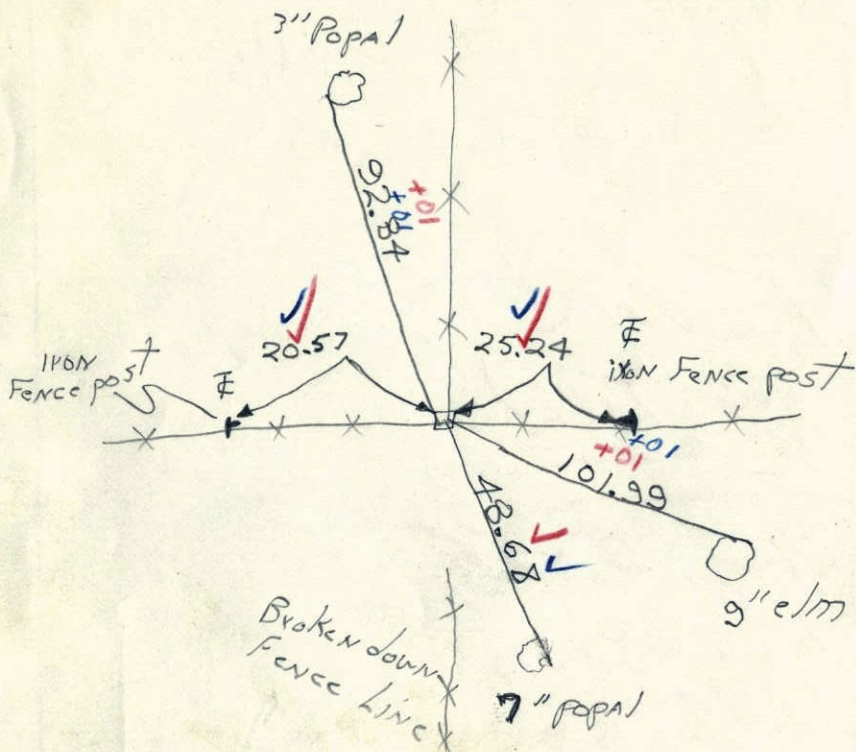
Aug. 5, 1966
*5 80°

H. Larson
D. Potter
G. Reimer

Found Granite monument Located by
N.C. HOIUM.

8-5-66
86

up 1'



E 1/4 CORNER OF SECTION 28
TOWNSHIP 32, RANGE 23

GRANITE

10/23/61

124/6

AT FENCE COR.

Found + Tied

Aug. 5, 1966

H. Larson
D. Potter
G. Reimer

Don't Have

N. C. HOIUM
AND ASSOCIATES, INC.
LAND SURVEYORS

ANOKA, MINNESOTA